

ELEPHANT ULTRA SENSOR



SLIM DESIGN

MAXIMUM COMFORT

Engineered with a slim profile and ergonomic design to ensure easy positioning and enhanced patient comfort.

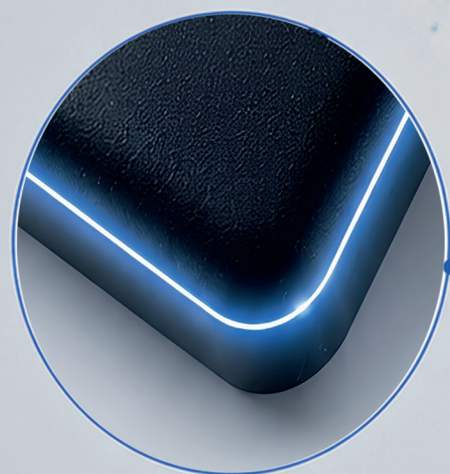


IPX7

WATERPROOF

Reliable protection
against liquid exposure.

Its tightly sealed construction enhances durability and prevents fluid infiltration. The high protection rating also allows safe and effective disinfection for improved hygiene control.



ROUNDED SENSOR EDGES

for a smoother and more
comfortable patient experience.

DURABLE REPLACEABLE SENSOR CABLE

Engineered for durability and performance.
Built to withstand daily clinical demands.



DURABLE TEAR-RESISTANT PU SHEATH

High-quality PU material
resists tears and wear for
long-lasting durability.



SMOOTH SURFACE EASY CLEANING & MAINTENANCE

Smooth, non-porous surface
prevents dirt buildup and
allows quick and easy cleaning.



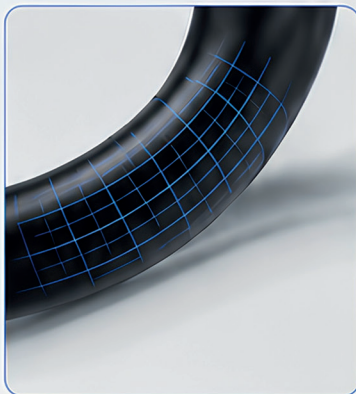
HIGH-PURITY CONDUCTIVE COPPER CORE

Premium copper core ensures
stable signal transmission and
consistent imaging performance.



TESTED FOR RELIABILITY MILLIONS OF BENDING CYCLES

Rigorously tested through millions
of bending cycles to ensure
long-term reliability in demanding
environments.



FLEXIBLE DESIGN EXCELLENT BENDING RESISTANCE

Flexible cable design withstands
repeated bending without damage,
ensuring reliable performance.

BUILT TO PERFORM. BUILT TO LAST.

Every detail is engineered for durability,
ensuring consistent performance
and peace of mind in every use.



DURABLE

Built with high-quality
materials for long-lasting
service life.



REPLACEABLE

Easy to replace sensor
cable for continuous
and uninterrupted use.



PRECISION

Stable and clear signal
transmission for accurate
imaging results.



RELIABLE

Trusted performance
designed for daily
clinical excellence.

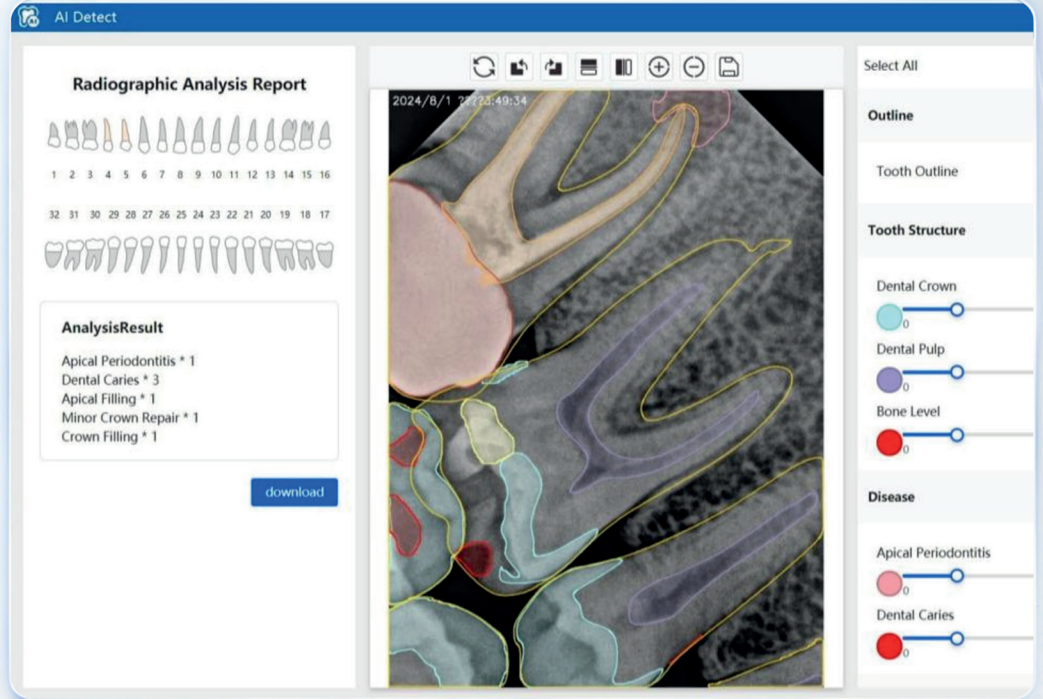
AI INTEGRATED SOFTWARE

Advanced AI diagnostics with a simple and intuitive interface for a smooth workflow experience.



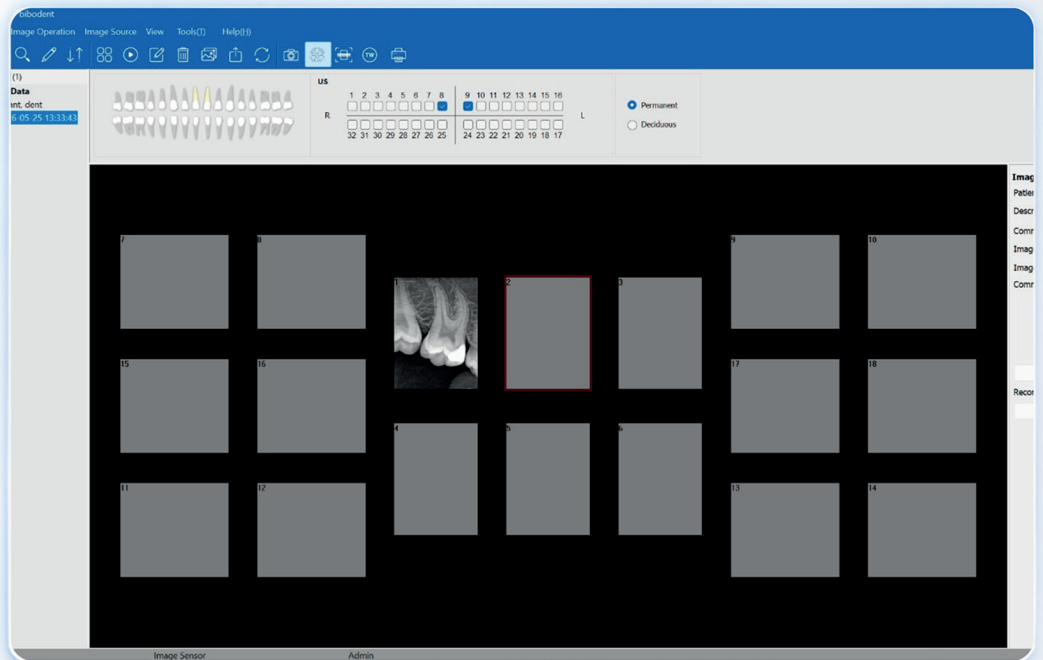
AI DETECTION & ANALYSIS

- Advanced AI algorithms automatically detect and highlight tooth structures, dental conditions, and restorative materials using different color indicators.
- Designed to assist dentists in achieving faster and more accurate diagnosis.
- Enhances patient communication by providing clearer and more visual diagnostic explanations.



USER-FRIENDLY WORKFLOW

- User-friendly software with a simple and intuitive interface for a smooth workflow experience.
- Easy navigation and organized tools for efficient daily operations.
- Quick image access and management for faster case handling.



AI DETECTION

Automatic detection and highlighting of tooth structures, conditions, and materials.



FASTER DIAGNOSIS

AI-powered analysis helps dentists achieve faster and more accurate diagnosis with confidence.



INTUITIVE WORKFLOW

Simple navigation and organized tools for an efficient and smooth user experience.



BETTER COMMUNICATION

Visual color indicators and clear reports help build trust and improve patient understanding.

SMART PORTABLE IMAGING SOLUTION

Instant images. Anywhere.
Anytime.



INSTANT IMAGE VIEWING

Built-in software allows instant image viewing directly on the device without the need for a laptop.



COMPACT & PORTABLE

Compact and portable design ensures easy movement and convenient use between rooms or clinics.



EFFICIENT WORKFLOW

Provides a smooth and efficient workflow with quick image access anytime, anywhere.



LIGHTWEIGHT & USER-FRIENDLY

Lightweight and user-friendly interface for comfortable daily operation.



INSTANT PREVIEW

View images instantly without any delay.



PORTABLE DESIGN

Easy to carry and use in any clinical setting.



CLEAR IMAGES

High-quality images for accurate diagnosis.



EASY OPERATION

Intuitive interface for effortless use.

TECHNICAL SPECIFICATIONS

High-performance imaging designed for reliable clinical diagnostics.



PRODUCT PARAMETERS

Parameter	Specification
 Model	DR730
 Sensor Type	APS CMOS
 External dimensions	39mm × 27.5mm
 Effective area	30mm × 22.5mm
 Scintillator	GOS 675 mm ²
 Pixel Size	18.5μm × 18.5μm
 Effective pixel	1.9M (1800 × 1200)
 Line pair resolution	27lp/mm
 Sensor thickness	6mm
 Grayscale range	0 ~ 4095
 Power	5.0 V (≥ 4.25V)
 Interface	USB2.0



MINIMUM COMPUTER CONFIGURATION REQUIREMENTS



PROCESSOR

1.5GHz Intel chip processor and above



MEMORY

4GB and above



HARD DISK

There is 1GB of space for software installation and 40GB of free space for using software



GRAPHICS

Nvidia/ATI based graphics card, 256MB of RAM



DISPLAY

1024×768 minimum screen resolution; 32-bit color mode



USB

At least two USB2.0 interfaces should be available (If it is a desktop, you must ensure that the two available USB2.0 interfaces are the interfaces behind the host)



OPERATING SYSTEM

Windows 7(32-bit/64-bit)
Windows 10(32-bit/64-bit)



Contact Us



+852440568345
+971566526456
+201063010235



info@elephant-dent.com



Address:

ROOM 1805 BLK 118 F EVERGAIN PLAZA
88 CONTAINER PORT ROAD, HONG KONG