



elephant HD Sensor



Patient Comfort

Rounded Edges: Designed for maximum patient comfort and reduced anxiety.



Slim Profile: Enhances adaptability to oral structures, featuring a mere 4.5 mm thickness.





Concave Back Design

Ergonomically supports fingers for stable handling during procedures.

Connection Box

Positioned at the cable's end to minimize impact and protect against shocks.



Cable with High Reliability

Reinforced cord connection
> 70,000 bending test ($\pm 90^\circ$)
passed



Sensor Sizes

Size 1.0

Not suitable in posterior region



Size 1.5

perfect balance of coverage and comfort



Size 2

Not comfortable due to its larger dimensions



Specifications	size 1	size 1.5	size 2
Dimensions	25.0*38.5*4.5	29.2*43.5*4.5	31.0*45.0*4.5
Active Area	20*30	24*33	26*36
Pixel	1000*1500	1200*1650	1300*1800
Sensor	APS CMOS	APS CMOS	APS CMOS
Grey Value	16Bit/0~65536	16Bit/0~65536	16Bit/0~65536
Power	5.0 V	5.0 V	5.0 V
Interface	USB 2.0	USB 2.0	USB 2.0

HD sensor specifications

Detector type: APS CMOS	Pixel size: 20um
Scintillator: Csl	Grayscale: 16 bits
Cable: replaceable	Resolution: 25lp/mm
Line length: standard 3m	Protection level: Ip68

- **Hybrid ICs on circuit board**

Low noise integrated circuit design

- **APS CMOS image sensor**

Low noise CMOS image sensors
In-house design and process

- **Csl scintillator**

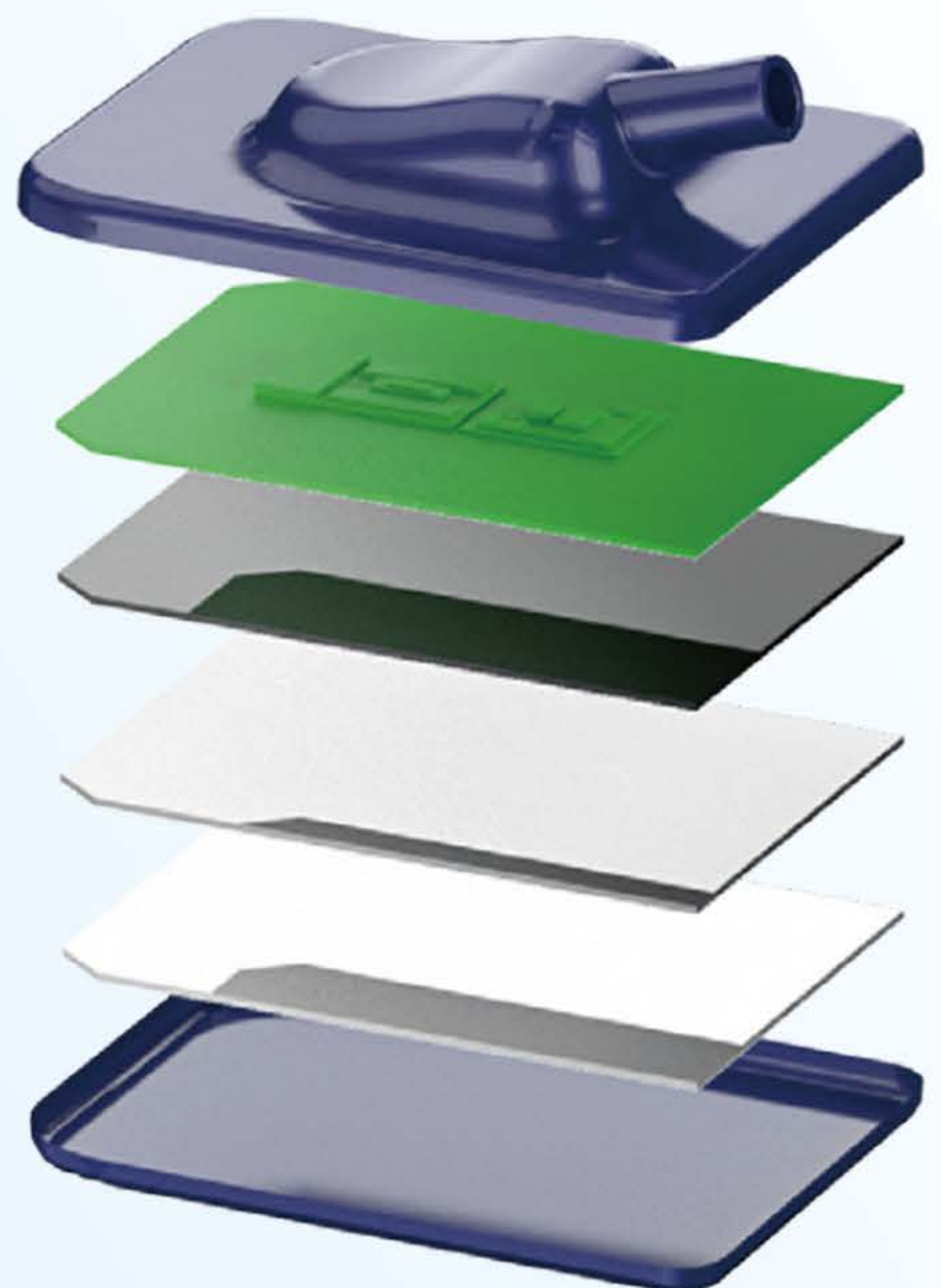
Directly deposited Csl
Low Dose (LD) and
High Resolution (HR) options

- **Robust and safety design**

Biocompatible IP68 protection
Easy infection control

- **Encapsulation layer**

Protects scintillator



The highest level of protection against water and dust in the world.

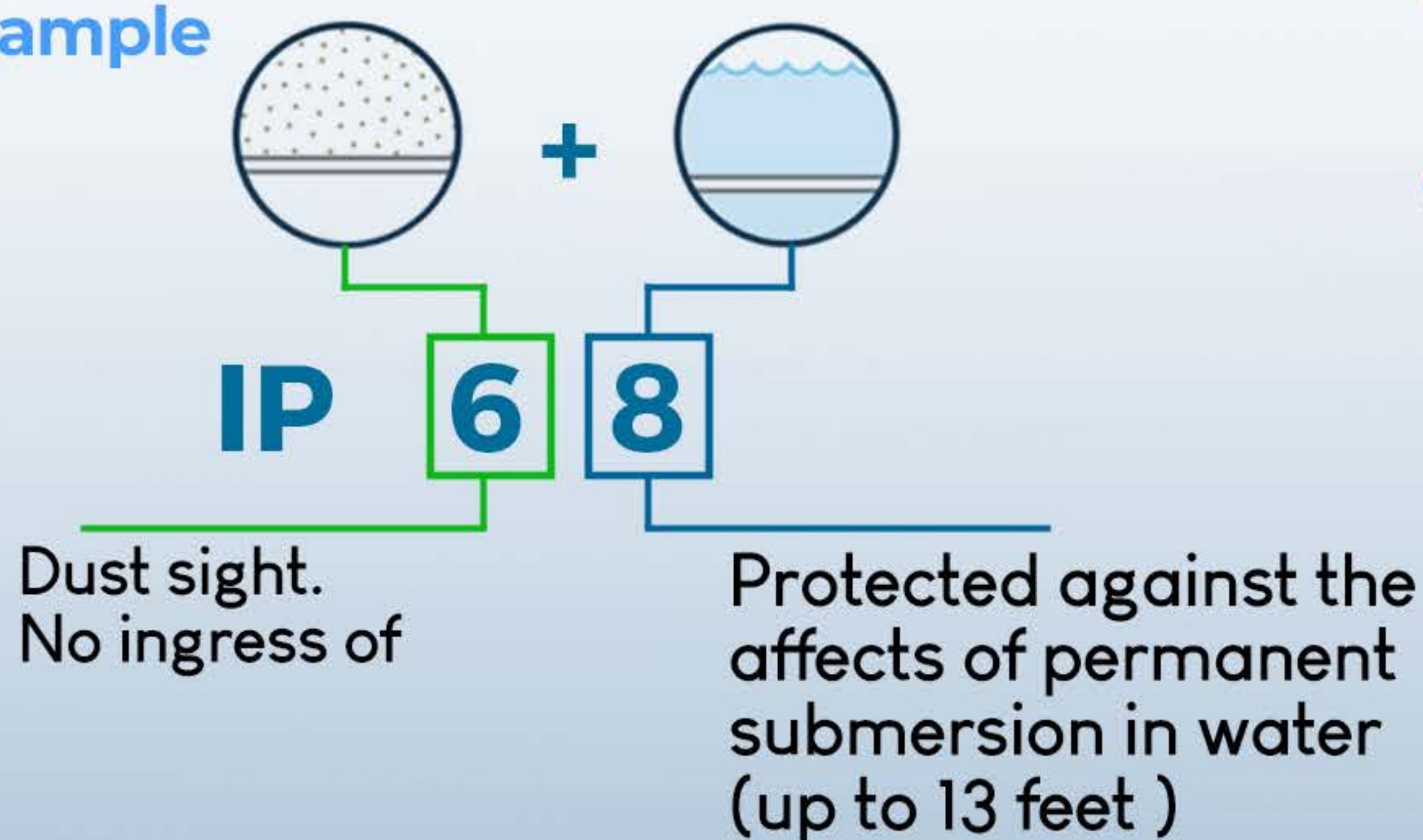
Degree of Protection against SOLID object.

- | | | |
|----------|----------------------------------|--|
| 0 | No protection | |
| 1 | solid object >50mm as a hand | |
| 2 | solid object >12.5mm as a finger | |
| 3 | solid object >2.5mm as a wire | |
| 4 | solid object >1mm as a strap | |
| 5 | dust protection | |
| 6 | no ingress of dust | |

Degree of Protection against LIQUID (Water).

- | | | |
|----------|---|--|
| 0 | No protection | |
| 1 | water drops | |
| 2 | water drops at 15° | |
| 3 | water spray at 60° | |
| 4 | water splashing | |
| 5 | water jets | |
| 6 | powerful jet and heavy seas | |
| 7 | Temporary submersion (30min. at 3 feet) | |
| 8 | permanent submersion (up to 13 feet) | |

Example



IP 68

Brilliant Waterproof performance



Sensor Software

User-Friendly Interface

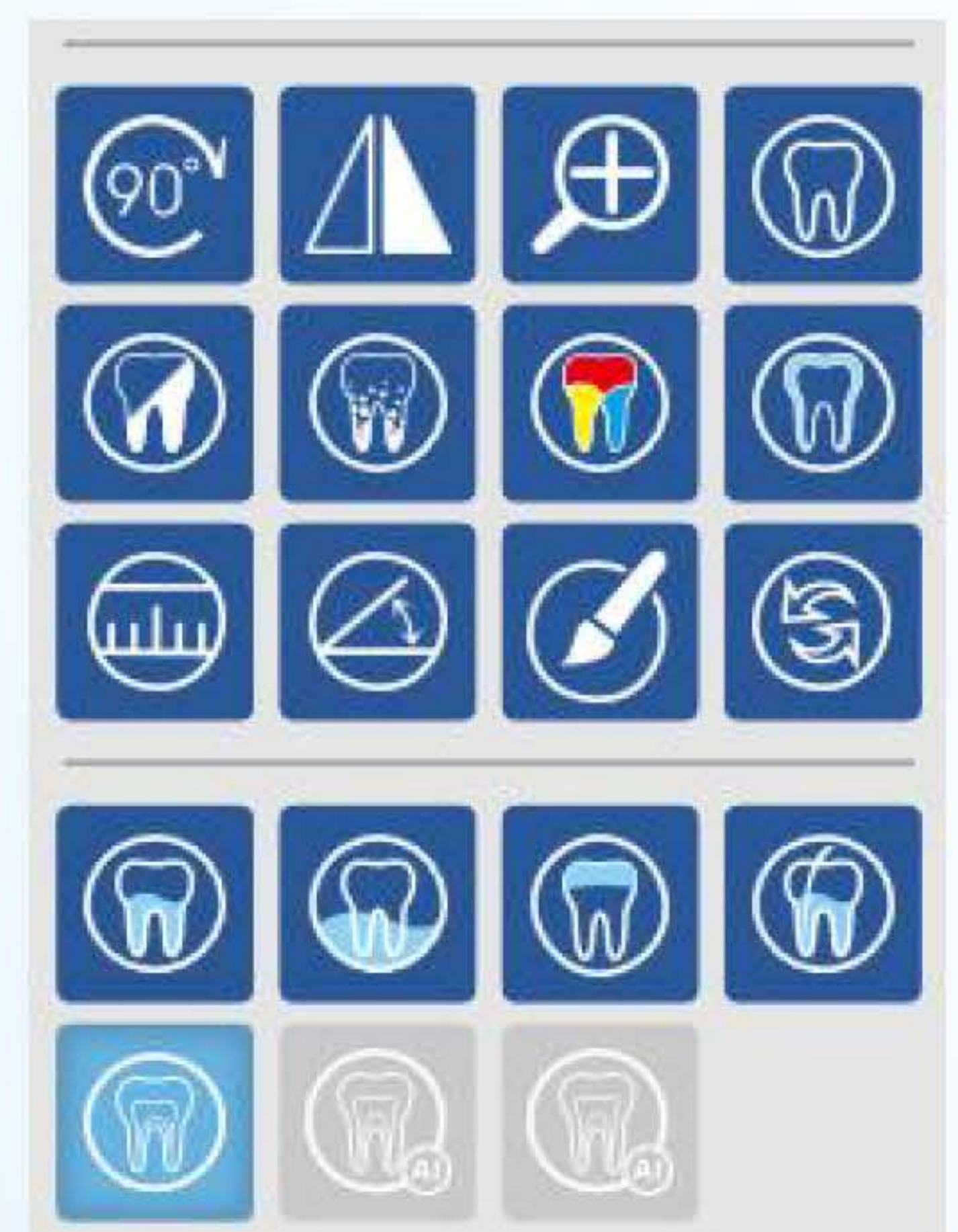
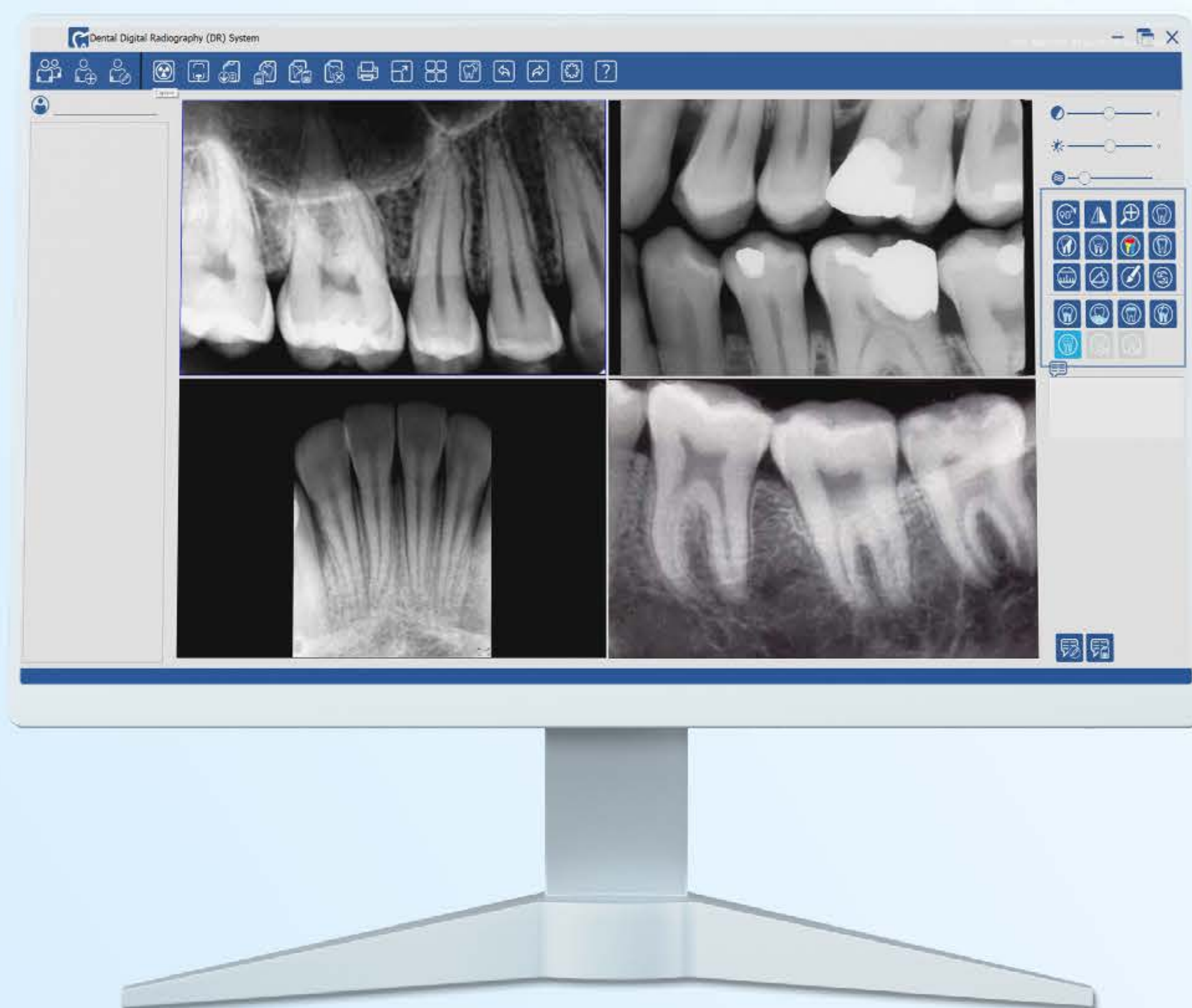
Designed to be intuitive and easy to navigate, ensuring a smooth user experience for dentists.

Simplified Operations

Provides a straightforward approach to image capture and analysis, saving time and effort.

Enhanced Performance

Offers features that optimize diagnostics and improve treatment planning, supporting accurate and effective dental care.



Icons for the ability to edit and customize the settings of the captured images to suit your needs.



CONTACT US



0085292083786
00852440568345



info@elephant-dent.com



Address:

ROOM 1805 BLK 118 F EVERGAIN PLAZA
88 CONTAINER PORT ROAD, HONG KONG

